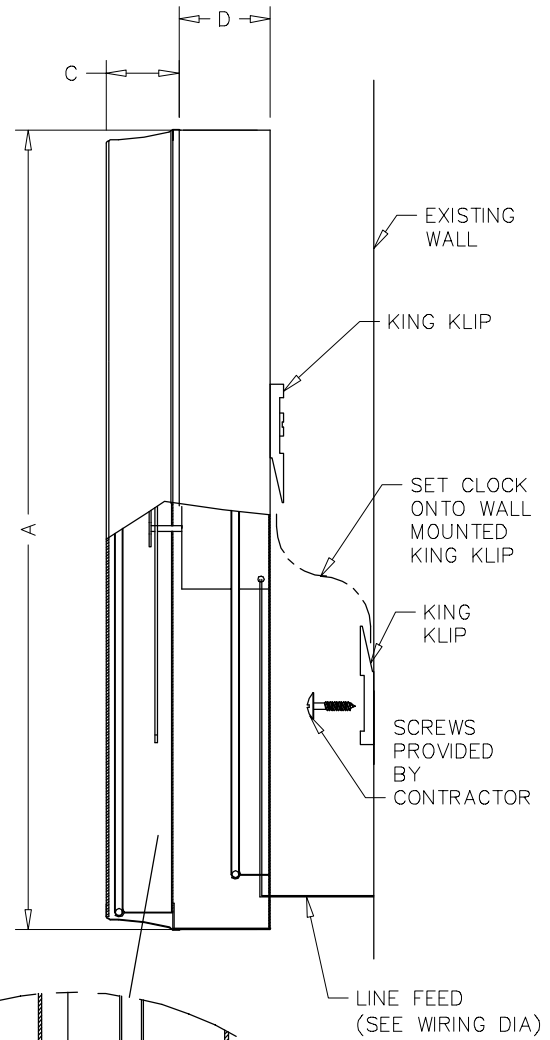
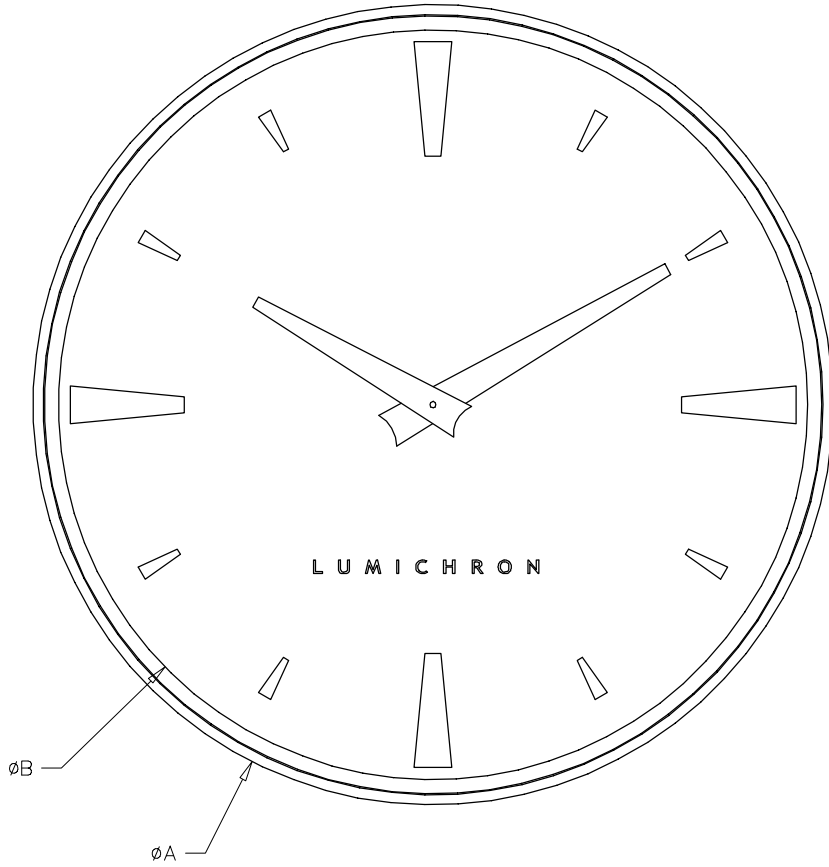


	30" CLOCK	36" CLOCK	42" CLOCK	48" CLOCK
CASE DIAMETER (A)	2'-6"	3'	3'-6"	4'
CLOCK OPENING (B)	2'-3"	2'-9"	3'-3"	3'-9"
BEZEL DEPTH (C)	2 3/4"	2 3/4"	2 3/4"	2 3/4"
CASE DEPTH (BACK LIT) (D)	5"	5"	5"	5"
CASE DEPTH (FACE LIT) (D)	4"	4"	4"	4"



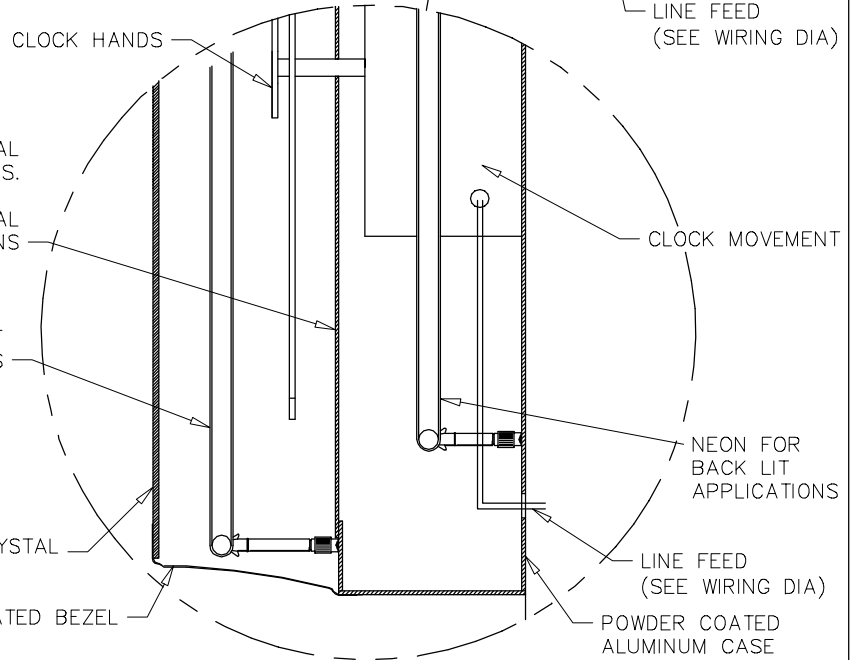
1/8-3/16 TRANSLUCENT WHITE POLYCARBONATE DIAL FOR BACK LIT APPS.

.080 ALUMINUM DIAL FOR FACE LIT APPLICATIONS

NEON FOR FACE LIT APPLICATIONS

1/8" TEMPERED GLASS CRYSTAL

POWDERED COATED BEZEL



DRAWING:	SURFACE_MOUNT_CLOCK		
DESCRIPTION:	TYPICAL SURFACE MOUNT CLOCK		
DRAWN BY:	BDB	DATE:	10/25/2007
CHECKED BY:	-	DATE:	-
REV LETTER:	-	JOB:	-

LUMICHRON
CLOCKS WORLDWIDE

LUMICHRON.COM
510 LEONARD ST. NW, GRAND RAPIDS, MI 49504 USA
PHONE: 616.774.2869 FAX: 616.774.0382